

rover
INFRAESTRUCTURAS

rover
MARITIME

rover
RAIL



GLOBAL EXPERTISE



Roads & Highways



Railways



Buildings



Water & Environment



Airports



Maritime



Railway Maintenance

THE SWEDISH BRANCH



35 employees
and a portfolio
of 1,000 MSEK



Railways



Maritime

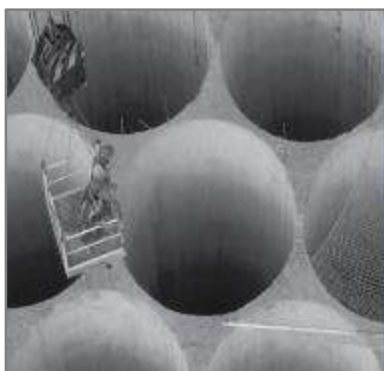


Railway Maintenance





- Execution of more than:
 - 13.200 m of Quays
 - 19.700 m of Breakwaters
 - 35.000.000 Tn of Rockfill
 - 3.500.000 m³ of Concrete
 - 93.000.000 Kg of Steel
 - 41.000.000 m³ of Dredging



- Development of more than 150 maritime projects.
- Recognition of authorities and clients



Specific Experience

Wharf on piles
and sheetpiles

01

Dredging

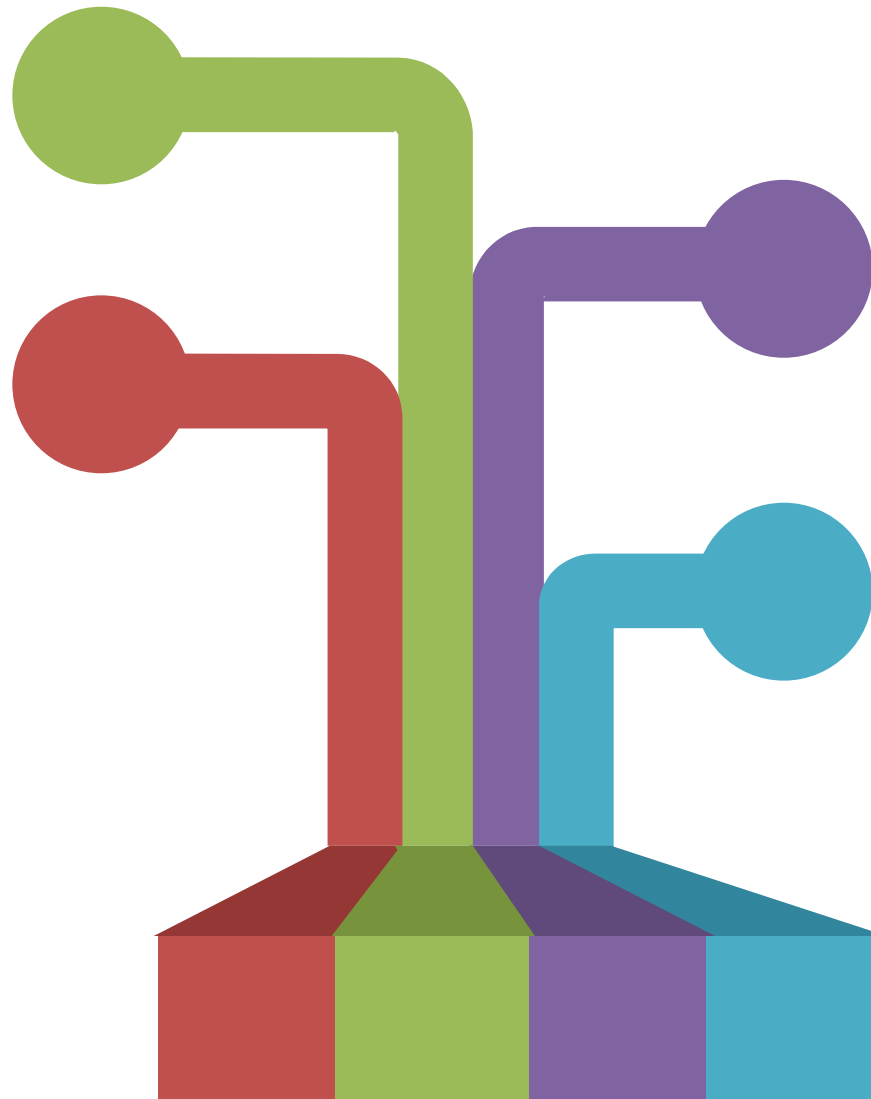
03

Gravity Quays. Caissons

02

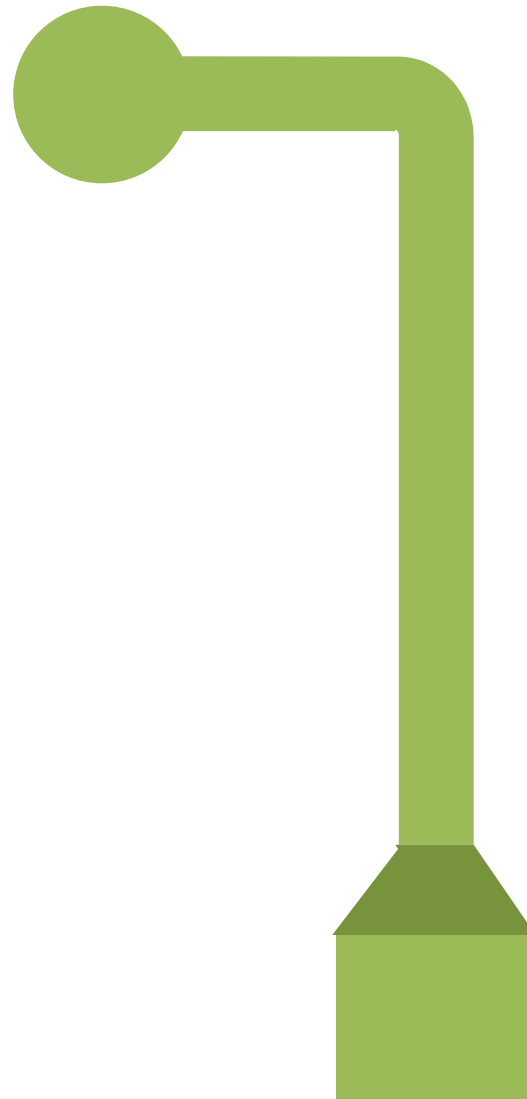
Breakwaters

04



Wharf on piles
and sheetpiles

01



Main Projects

- Level space and commercial quays sheltered by Botafoc breakwater at Ibiza Port
- Bulk Cargo Terminal Infrastructure, Croatia
- Lineal Quay in north shore of Gandia Port
- Expansion of Trelleborg Port, Sweden
- Expansion of Gavle Port, Sweden

1. Wharf on piles and sheetpiles

Expansion of Gavle Port, Sweden

Budget: 24 MM€

To be executed: 16 months

Main Activities

- Sheetpiles: 61.000 m²
- Piles: 2.800 Tn
- Filling material: 6.700 Tn
- Reinforcing steel:1.100 Tn
- Concrete: 19.000 m³
- Bollards: 11 uts



Main Projects

- Valencia Port enlargement, Southern dock and Quay Line, Phase 1
- Cruise dock in the Port of Valencia. Extension, phase I
- Berth for large vessels at the docks of Poniente. Palma de Mallorca
- Quay Prat Construction, Barcelona Port, Phase I
- Southern Quay of the southern basin of Sagunto Port
- Western quay southern stretch Sagunto Port extension
- North dock quay extension in Valencia Port

Gravity Quays

02



2. Gravity Quays

Valencia Port enlargement, Southern dock and Quay Line, Phase 1

Budget: 175 MM€

Period: 93 months



Cruise dock in the Port of Valencia.

Extension, phase I

Budget: 22 MM€

Period: 19 months

Dredging
03



1. Wharf on piles and sheetpiles

Expansion of Trelleborg Port, Sweden. Quays 13 and 14

Budget: 33 MM€

To be executed: 18 months

Main Activities

- Sheetpiles: 15.000 m²
- Piles: 39.000 Kg
- Dredging: 650.000 m³
- Filling material: 35.000 m³
- Reinforcing steel: 500.000 Kg
- Concrete slab on deck: 80.000 m²
- Bollards: 16 uts

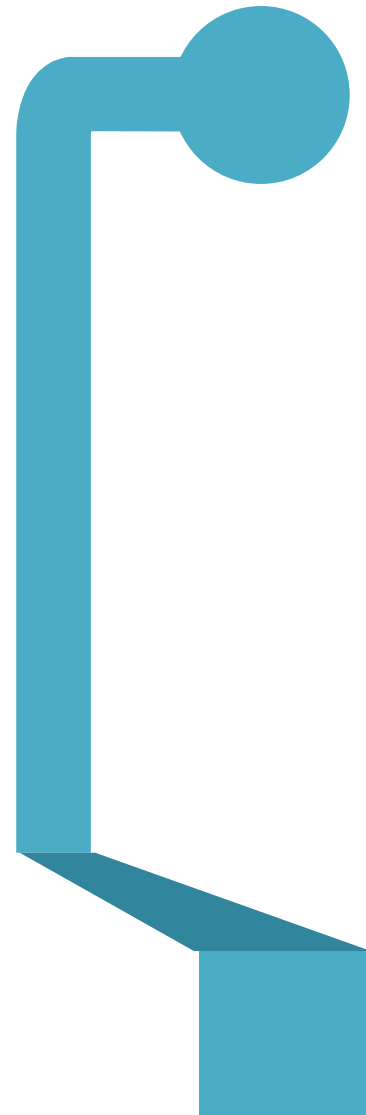


Main Projects

- Sheltering works for Valencia Port enlargement
- Breakwater in Punta Sollana
- Improvement of East breakwater. Phase 2, Barcelona Port

Breakwaters

04



4. Breakwaters

Improvement of East breakwater. Phase 2, Barcelona Port

Budget: 22 MM€
To be executed: 19 months



Own Equipment

- Floating dock for caisson 50x20m
 - Backhoe- YO-YO
 - Pontoons
 - Crawler crane
 - Hydraulic rotary rig
 - Split barge
 - Back digger
 - Dumpers





More than 100 MM€
in similar current
portfolio projects

01 SIMILAR PROJECT
EXPERIENCE

Specific equipment
ready to start the
works

02 OWN EQUIPMENT
TO EXECUTE IT

Site managers and
engineers with more
than 20 years
experience in
maritime projects

03 HHRR

17 months to have
concluded works

04 PERIOD

Trelleborgs Hamn bygger färjeläge 13 & 14



PROJECT EXECUTION PROGRESS



Co-financed by the European Union
Trans-European Transport Network (TEN-T)

ENTREPRENÖR:



Trelleborgs Hamn bygger färjeläge 13 & 14

07-November-2018



Co-financed by the European Union
Trans-European Transport Network (TEN-T)

ENTREPRENÖR:



Trelleborgs Hamn bygger färjeläge 13 & 14

03-January-2019



Co-financed by the European Union
Trans-European Transport Network (TEN-T)

ENTREPRENÖR:



Trelleborgs Hamn bygger färjeläge 13 & 14

28-February-2019



Co-financed by the European Union
Trans-European Transport Network (TEN-T)

ENTREPRENÖR:



Trelleborgs Hamn bygger färjeläge 13 & 14

28-March-2019



Co-financed by the European Union
Trans-European Transport Network (TEN-T)

ENTREPRENÖR:



Trelleborgs Hamn bygger färjeläge 13 & 14

26-April-2019



Co-financed by the European Union
Trans-European Transport Network (TEN-T)

ENTREPRENÖR:



Trelleborgs Hamn bygger färjeläge 13 & 14

21-May-2019



Co-financed by the European Union
Trans-European Transport Network (TEN-T)

ENTREPRENÖR:

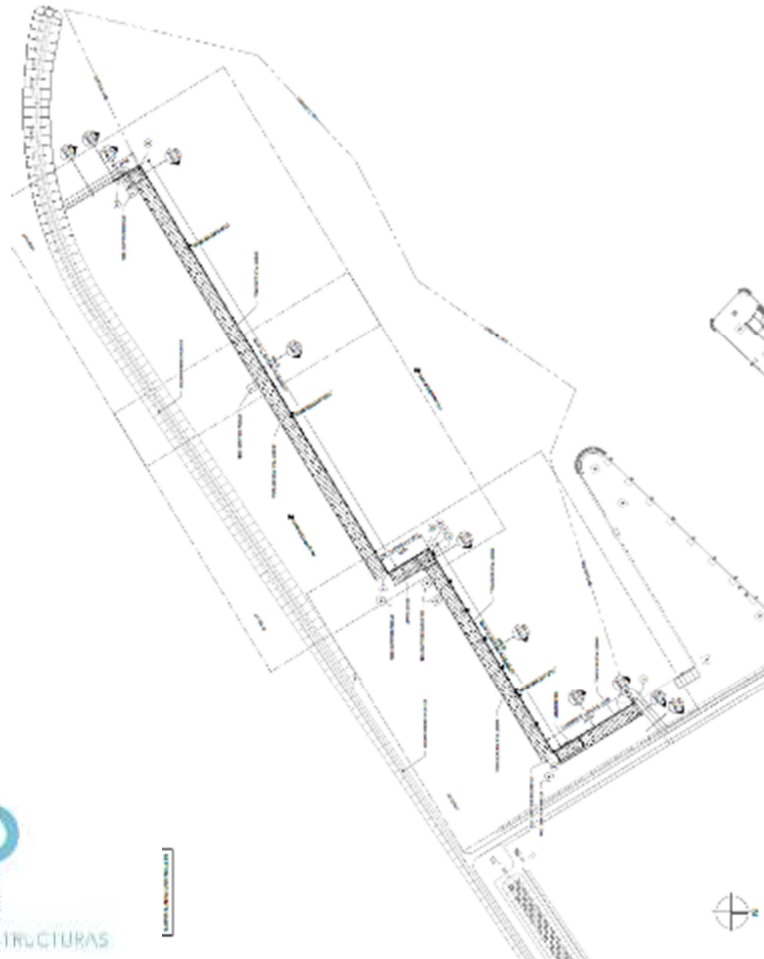


Trelleborgs Hamn bygger färjeläge 13 & 14



Trelleborgs Hamn bygger färjeläge 13 & 14

Sheet Pile Design : General Plan View



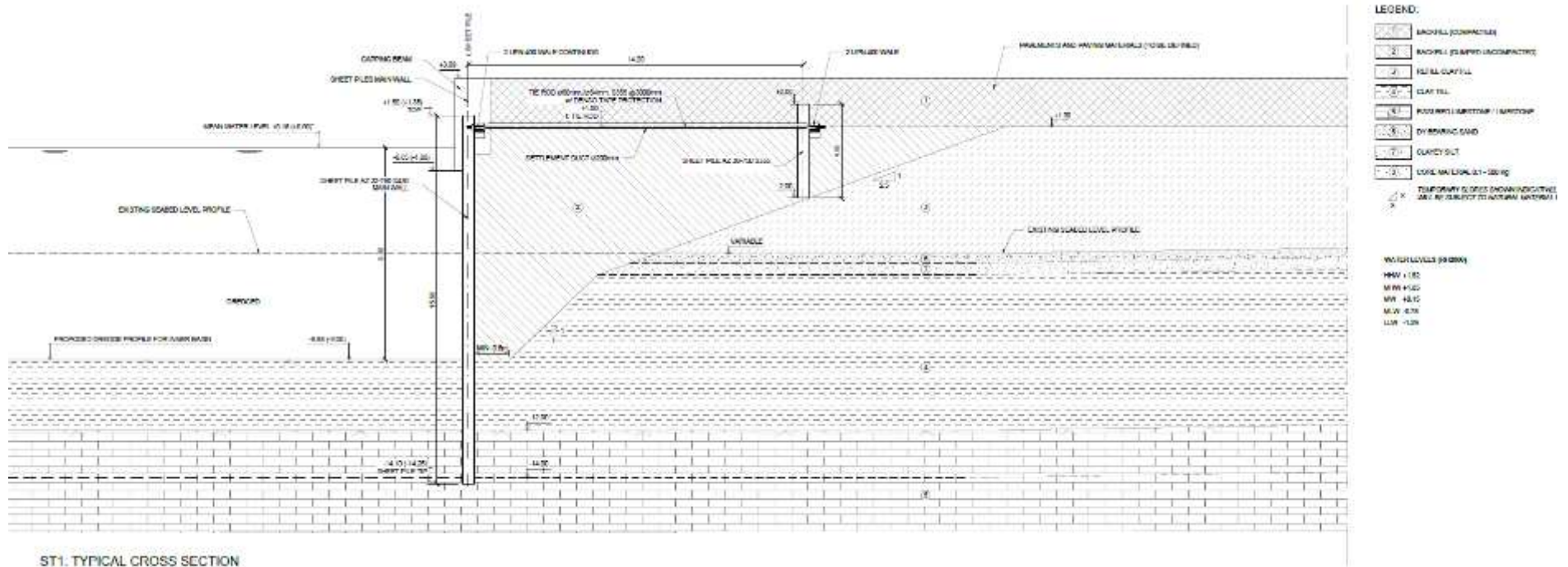
Co-financed by the European Union
Trans-European Transport Network (TEN-T)

ENTREPRENÖR:



Trelleborgs Hamn bygger färjeläge 13 & 14

Sheet Pile Design : Typical Section



ST1. TYPICAL CROSS SECTION
SCALE 1:500



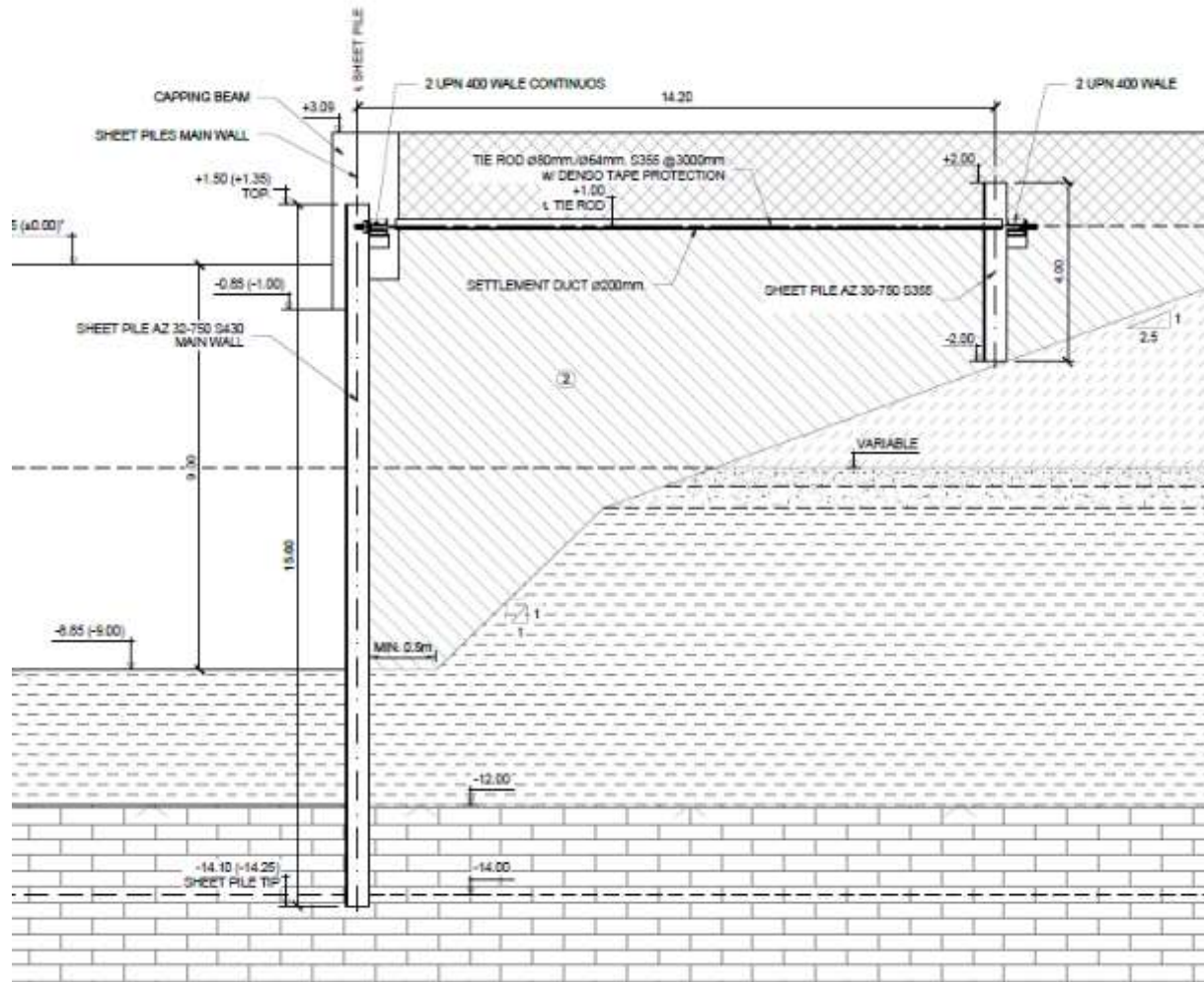
Co-financed by the European Union
Trans-European Transport Network (TEN-T)

ENTREPRENÖR:



Trelleborgs Hamn bygger färjeläge 13 & 14

Sheet Pile Design : Typical Section



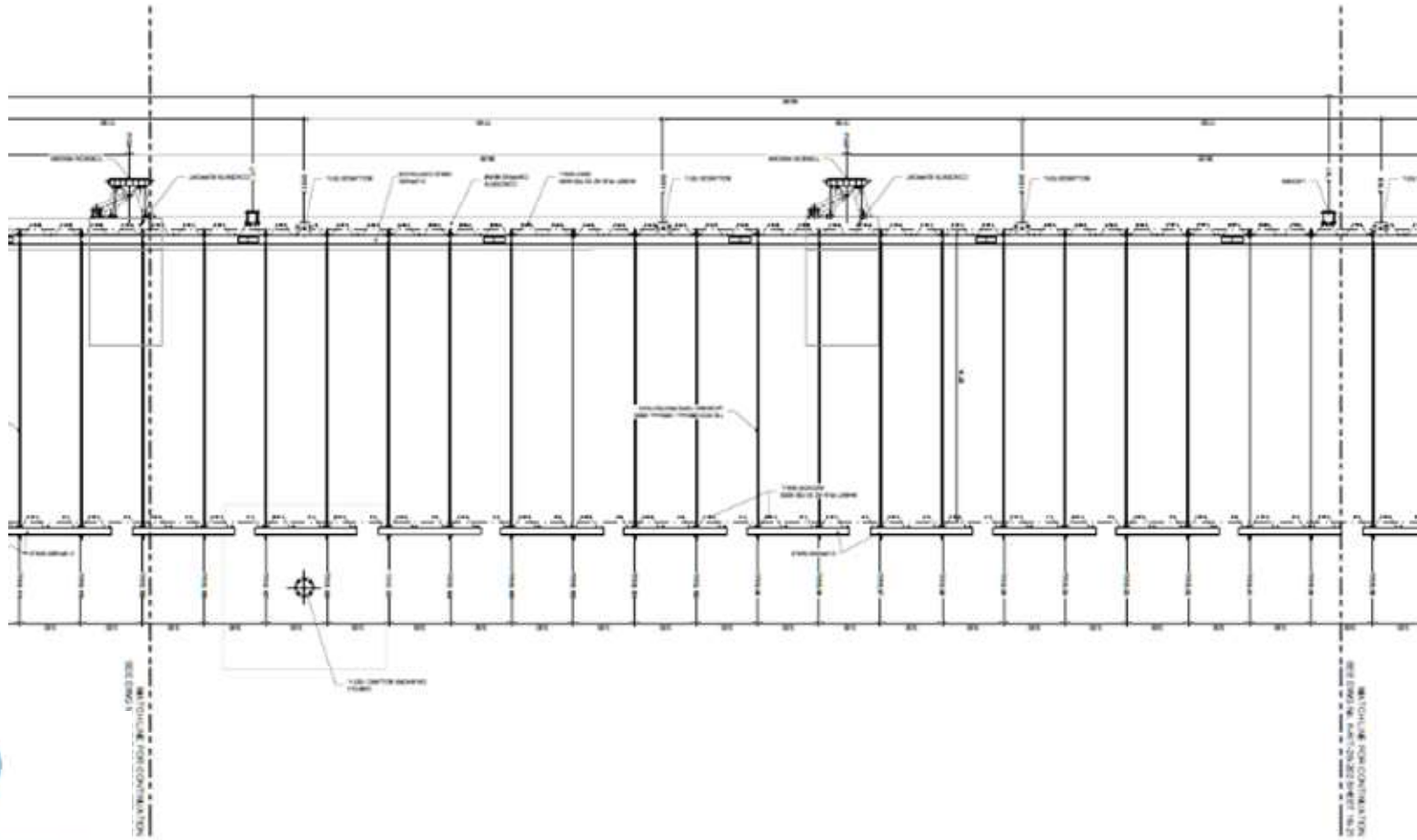
Co-financed by the European Union
Trans-European Transport Network (TEN-T)

ENTREPRENÖR:



Trelleborgs Hamn bygger färjeläge 13 & 14

Sheet Pile Design : General Plan View Detail



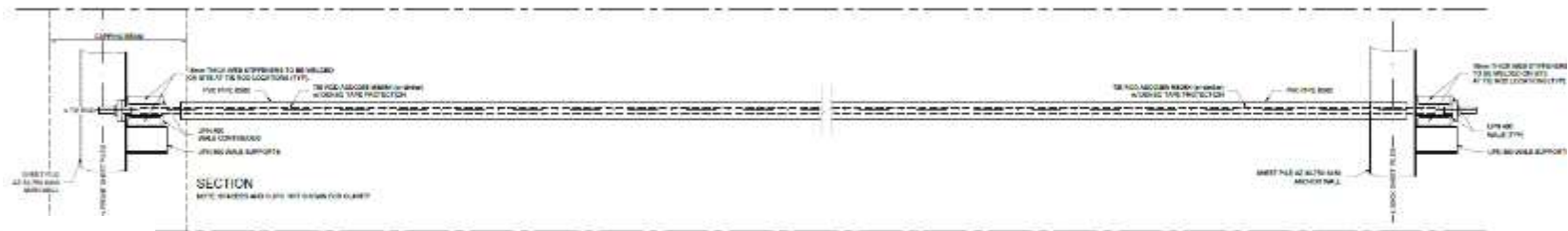
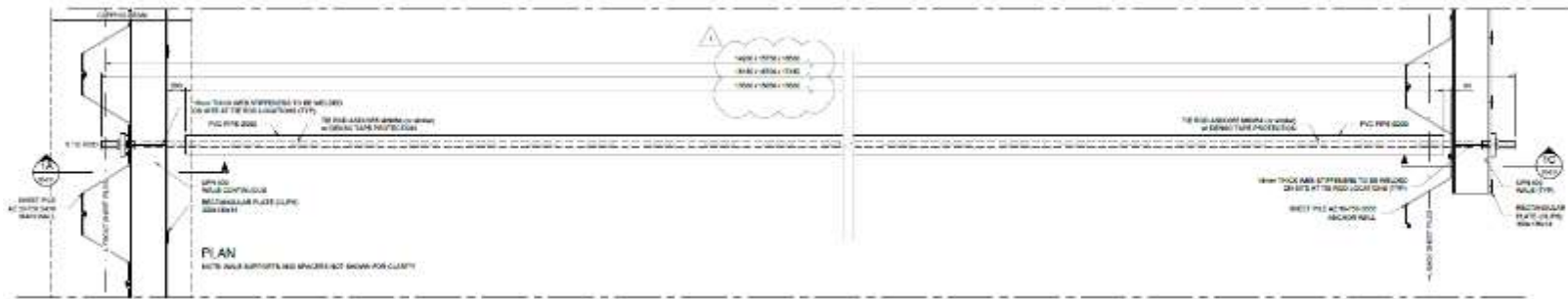
Co-financed by the European Union
Trans-European Transport Network (TEN-T)

ENTREPRENÖR:



Trelleborgs Hamn bygger färjeläge 13 & 14

Sheet Pile Design : Typical Tie Rod Details



TYPICAL TIE ROD DETAILS
SCALE: 1:50



Co-financed by the European Union
Trans-European Transport Network (TEN-T)

ENTREPRENÖR:



Trelleborgs Hamn bygger färjeläge 13 & 14



SHEET PILE QUAY RESOURCES & EXECUTION



Co-financed by the European Union
Trans-European Transport Network (TEN-T)

ENTREPRENÖR:



Trelleborgs Hamn bygger färjeläge 13 & 14

Sheet Pile Execution : Quay Sheet Piles



Trelleborgs Hamn bygger färjeläge 13 & 14

Sheet Pile Execution : Quay Sheet Piles



Trelleborgs Hamn bygger färjeläge 13 & 14

Sheet Pile Execution : Quay Sheet Piles



Trelleborgs Hamn bygger färjeläge 13 & 14

Sheet Pile Execution : Quay Sheet Piles



Trelleborgs Hamn bygger färjeläge 13 & 14

Sheet Pile Execution : Quay Sheet Piles





Madrid, Spain

Box 28023
Tel: +34 914 444 480
info@rovergrupo.com

Stockholm, Sweden

Norrtulsgatan 6, 113 29
Tel: +46 72 583 88 78
antonio.daban@rovergrupo.com

Trelleborg, Sweden

Trelleborgs Hamn
Tel: +46 76 631 99 36
fcodoner@rovergrupo.com